

## Product datasheet for **TA806496**

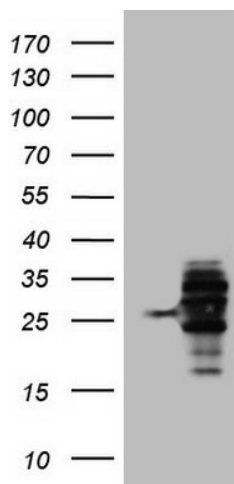
### WIBG (PYM1) Mouse Monoclonal Antibody [Clone ID: OTI5E2]

#### Product data:

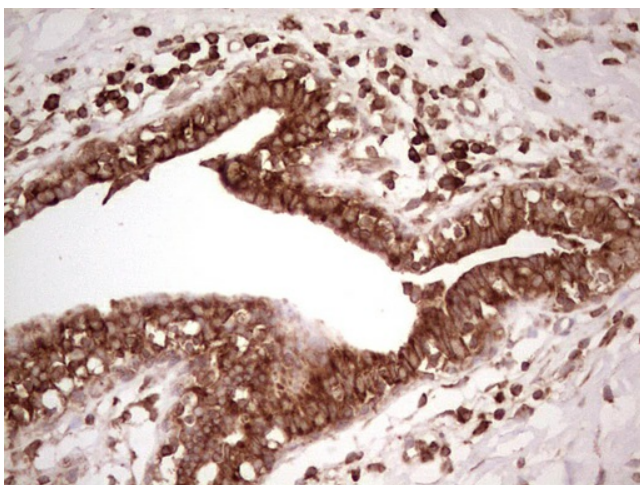
Product Type:	Primary Antibodies
Clone Name:	OTI5E2
Applications:	IHC, WB
Recommend Dilution:	WB 1:2000, IHC 1:150
Reactivity:	Human
Host:	Mouse
Isotype:	IgG1
Clonality:	Monoclonal
Immunogen:	Full length human recombinant protein of human WIBG (NP_115721) produced in HEK293T cell.
Formulation:	PBS (PH 7.3) containing 1% BSA, 50% glycerol and 0.02% sodium azide.
Concentration:	1 mg/ml
Purification:	Purified from mouse ascites fluids or tissue culture supernatant by affinity chromatography (protein A/G)
Gene Name:	PYM homolog 1, exon junction complex associated factor
Database Link:	<a href="#">NP 115721</a> <a href="#">Entrez Gene 84305</a> <a href="#">Human</a>
Synonyms:	PYM; WIBG

[View online »](#)

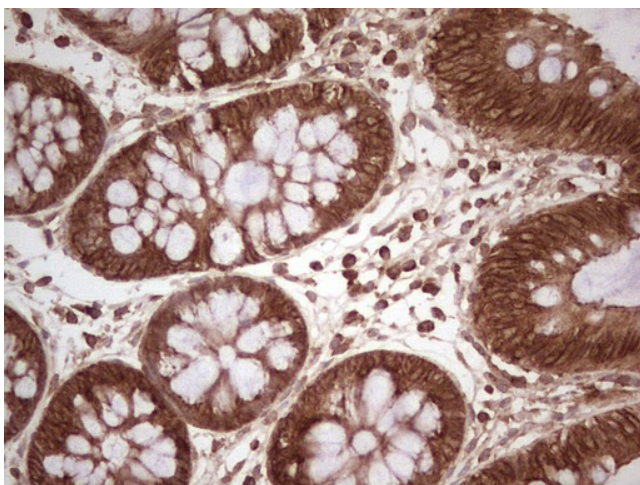
## Product images:



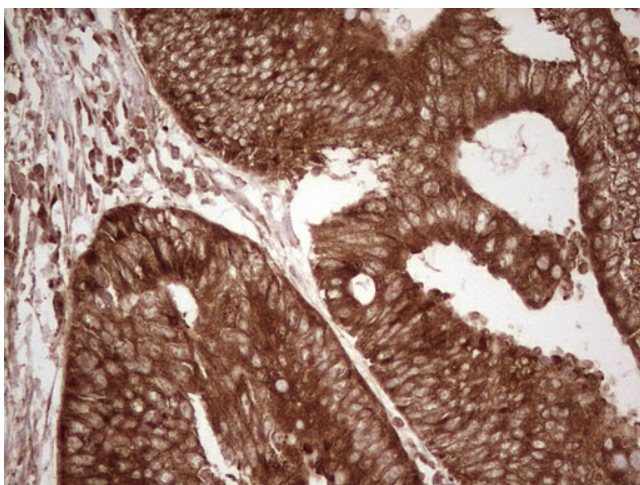
HEK293T cells were transfected with the pCMV6-ENTRY control (Left lane) or pCMV6-ENTRY WIBG ([RC202988], Right lane) cDNA for 48 hrs and lysed. Equivalent amounts of cell lysates (5 ug per lane) were separated by SDS-PAGE and immunoblotted with anti-WIBG. Positive lysates [LY410182] (100ug) and [LC410182] (20ug) can be purchased separately from OriGene.



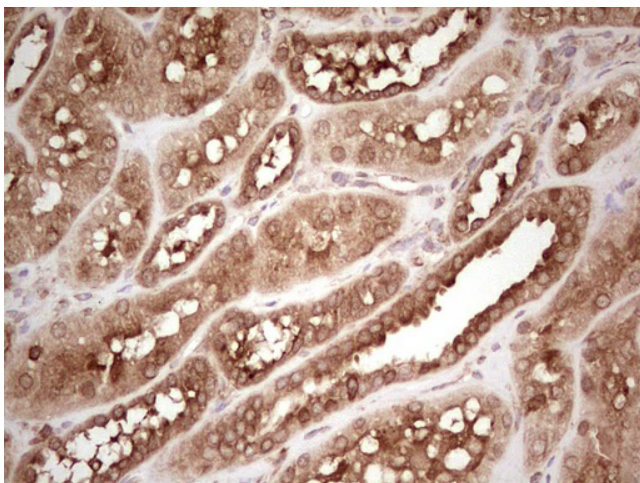
Immunohistochemical staining of paraffin-embedded Adenocarcinoma of Human breast tissue using anti-WIBG mouse monoclonal antibody. (Heat-induced epitope retrieval by 1 mM EDTA in 10mM Tris, pH8.5, 120°C for 3min, TA806496)



Immunohistochemical staining of paraffin-embedded Human colon tissue within the normal limits using anti-WIBG mouse monoclonal antibody. (Heat-induced epitope retrieval by 1 mM EDTA in 10mM Tris, pH8.5, 120°C for 3min, TA806496)

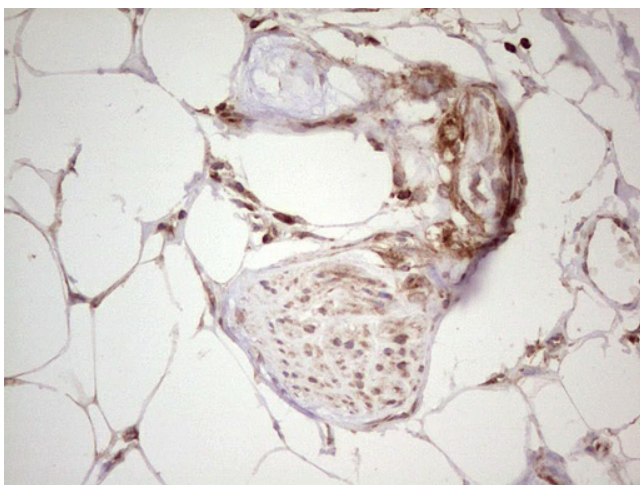


Immunohistochemical staining of paraffin-embedded Adenocarcinoma of Human colon tissue using anti-WIBG mouse monoclonal antibody. (Heat-induced epitope retrieval by 1 mM EDTA in 10mM Tris, pH8.5, 120°C for 3min, TA806496)

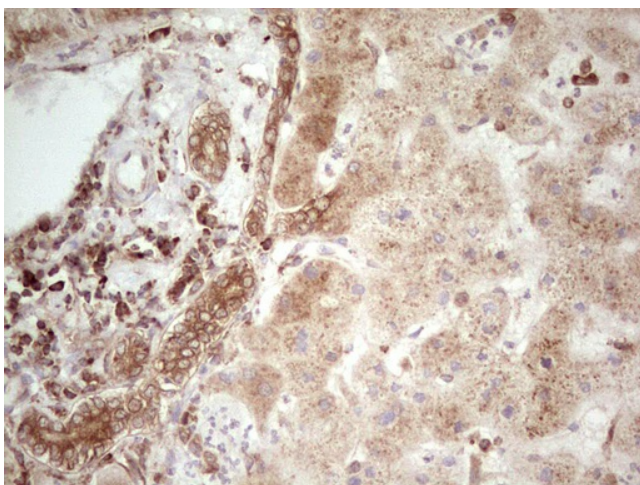


Immunohistochemical staining of paraffin-embedded Human Kidney tissue within the normal limits using anti-WIBG mouse monoclonal antibody. (Heat-induced epitope retrieval by 1 mM EDTA in 10mM Tris, pH8.5, 120°C for 3min, TA806496)

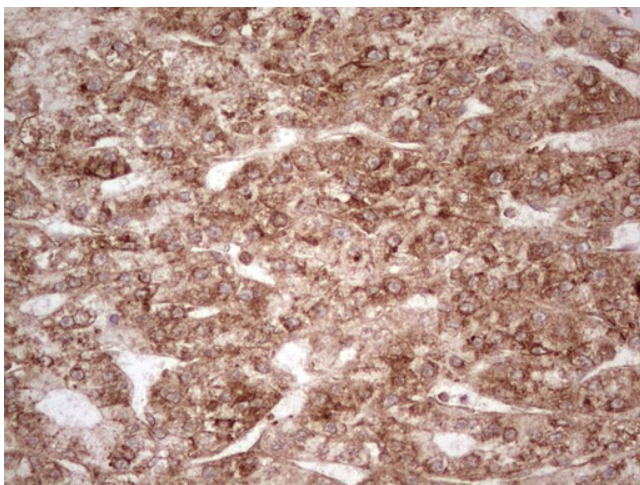




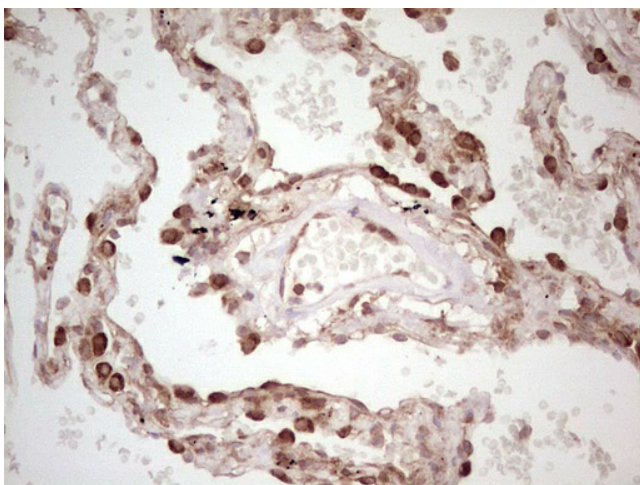
Immunohistochemical staining of paraffin-embedded Carcinoma of Human kidney tissue using anti-WIBG mouse monoclonal antibody. (Heat-induced epitope retrieval by 1 mM EDTA in 10mM Tris, pH8.5, 120°C for 3min, TA806496)



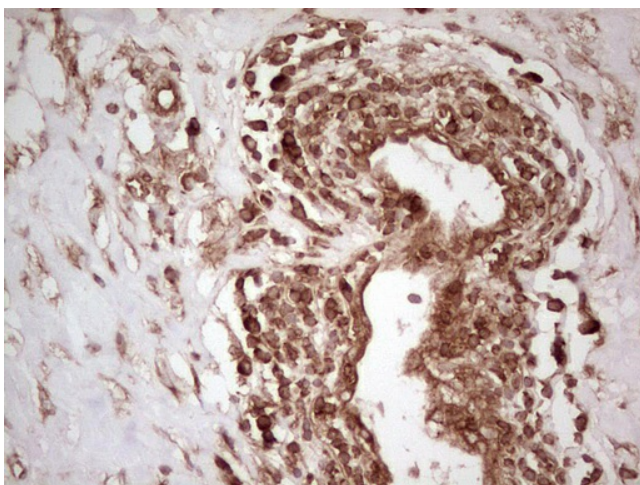
Immunohistochemical staining of paraffin-embedded Human liver tissue within the normal limits using anti-WIBG mouse monoclonal antibody. (Heat-induced epitope retrieval by 1 mM EDTA in 10mM Tris, pH8.5, 120°C for 3min, TA806496)



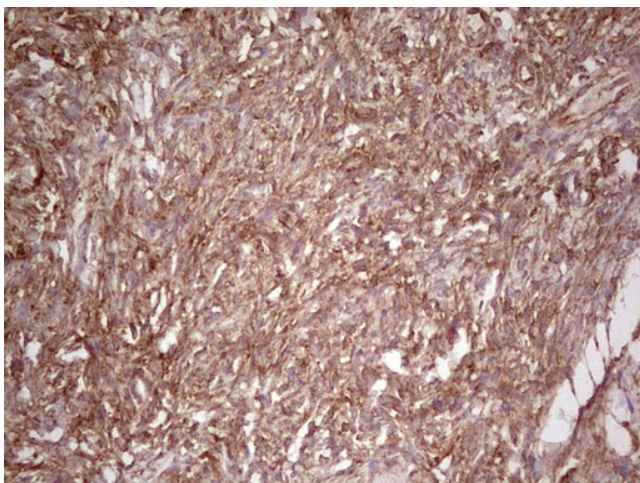
Immunohistochemical staining of paraffin-embedded Carcinoma of Human liver tissue using anti-WIBG mouse monoclonal antibody. (Heat-induced epitope retrieval by 1 mM EDTA in 10mM Tris, pH8.5, 120°C for 3min, TA806496)



Immunohistochemical staining of paraffin-embedded Human lung tissue within the normal limits using anti-WIBG mouse monoclonal antibody. (Heat-induced epitope retrieval by 1 mM EDTA in 10mM Tris, pH8.5, 120°C for 3min, TA806496)

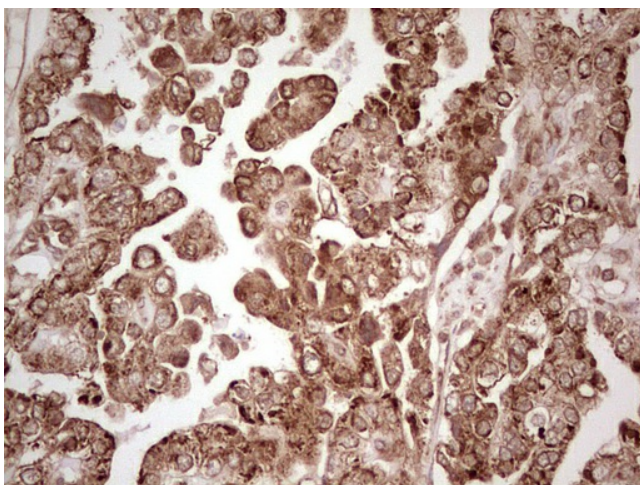


Immunohistochemical staining of paraffin-embedded Carcinoma of Human lung tissue using anti-WIBG mouse monoclonal antibody. (Heat-induced epitope retrieval by 1 mM EDTA in 10mM Tris, pH8.5, 120°C for 3min, TA806496)

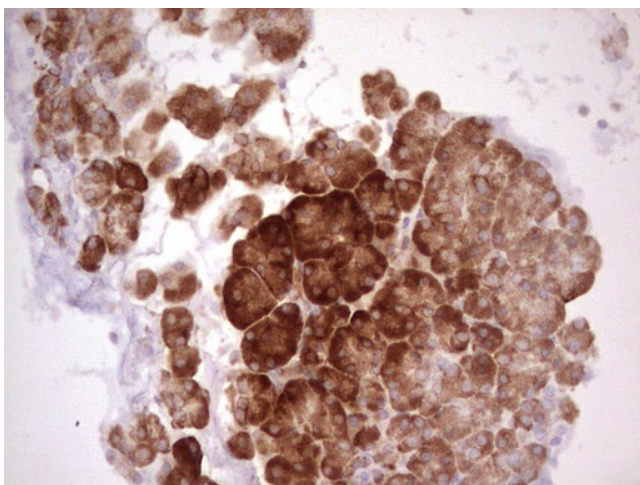


Immunohistochemical staining of paraffin-embedded Human Ovary tissue within the normal limits using anti-WIBG mouse monoclonal antibody. (Heat-induced epitope retrieval by 1 mM EDTA in 10mM Tris, pH8.5, 120°C for 3min, TA806496)

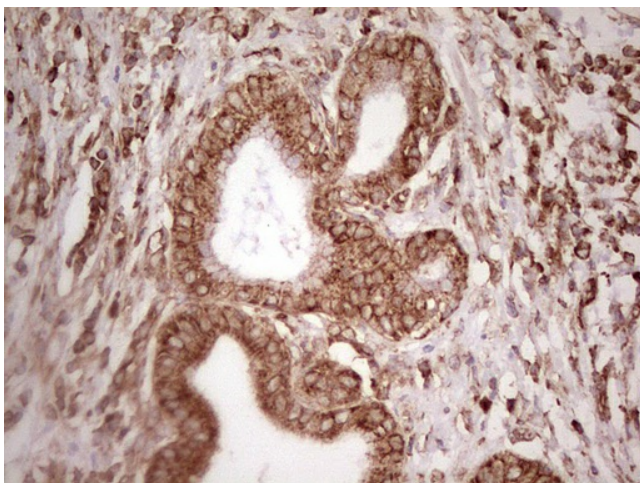




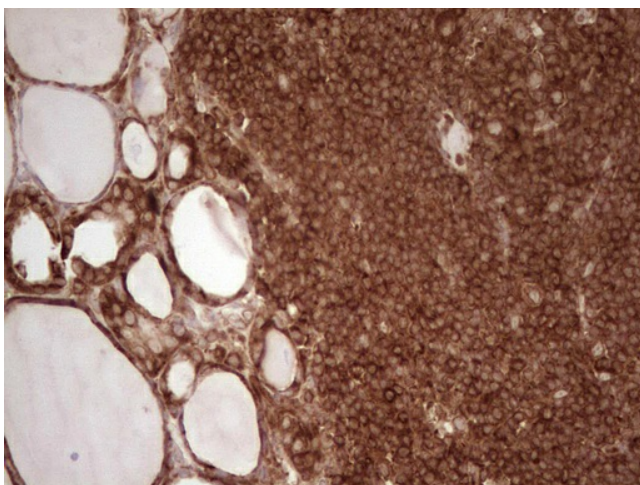
Immunohistochemical staining of paraffin-embedded Adenocarcinoma of Human ovary tissue using anti-WIBG mouse monoclonal antibody. (Heat-induced epitope retrieval by 1 mM EDTA in 10mM Tris, pH8.5, 120°C for 3min, TA806496)



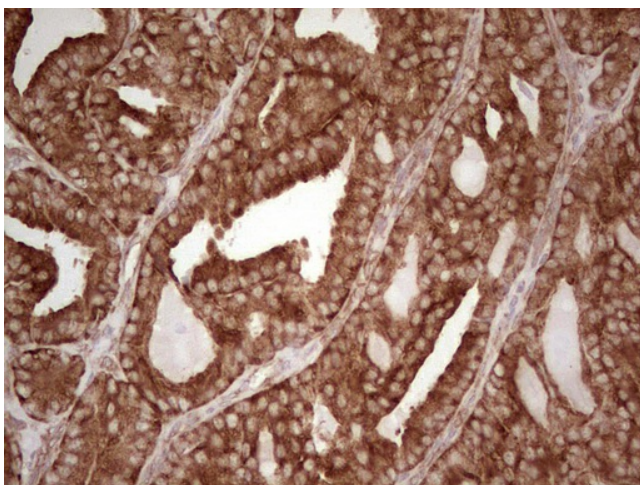
Immunohistochemical staining of paraffin-embedded Human pancreas tissue within the normal limits using anti-WIBG mouse monoclonal antibody. (Heat-induced epitope retrieval by 1 mM EDTA in 10mM Tris, pH8.5, 120°C for 3min, TA806496)



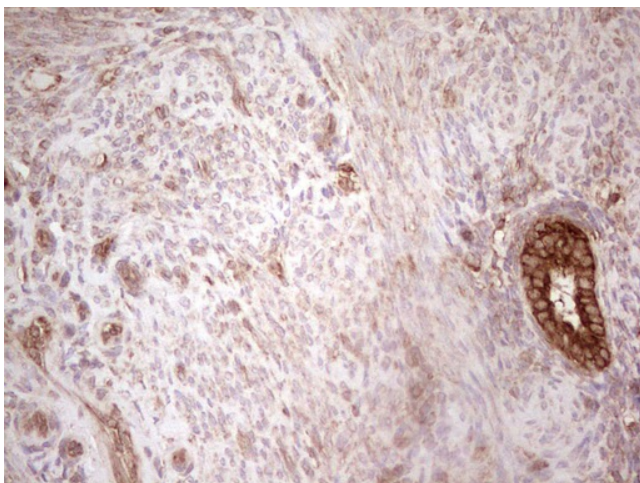
Immunohistochemical staining of paraffin-embedded Carcinoma of Human pancreas tissue using anti-WIBG mouse monoclonal antibody. (Heat-induced epitope retrieval by 1 mM EDTA in 10mM Tris, pH8.5, 120°C for 3min, TA806496)



Immunohistochemical staining of paraffin-embedded Human thyroid tissue within the normal limits using anti-WIBG mouse monoclonal antibody. (Heat-induced epitope retrieval by 1 mM EDTA in 10mM Tris, pH8.5, 120°C for 3min, TA806496)

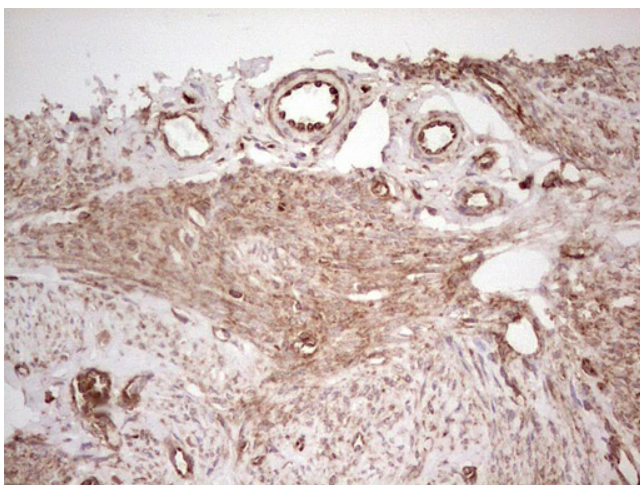


Immunohistochemical staining of paraffin-embedded Carcinoma of Human thyroid tissue using anti-WIBG mouse monoclonal antibody. (Heat-induced epitope retrieval by 1 mM EDTA in 10mM Tris, pH8.5, 120°C for 3min, TA806496)

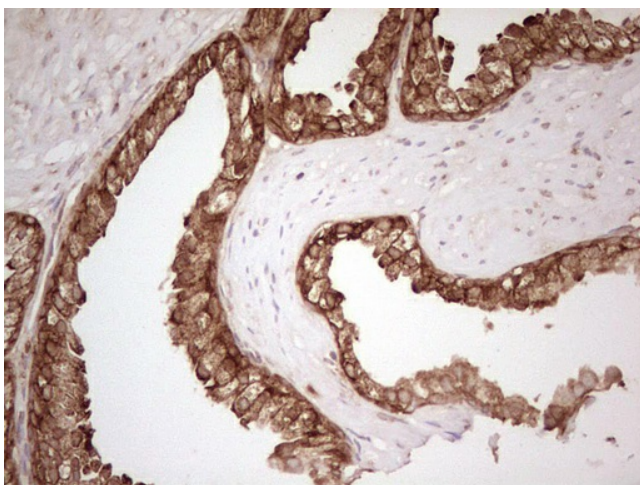


Immunohistochemical staining of paraffin-embedded Human endometrium tissue within the normal limits using anti-WIBG mouse monoclonal antibody. (Heat-induced epitope retrieval by 1 mM EDTA in 10mM Tris, pH8.5, 120°C for 3min, TA806496)

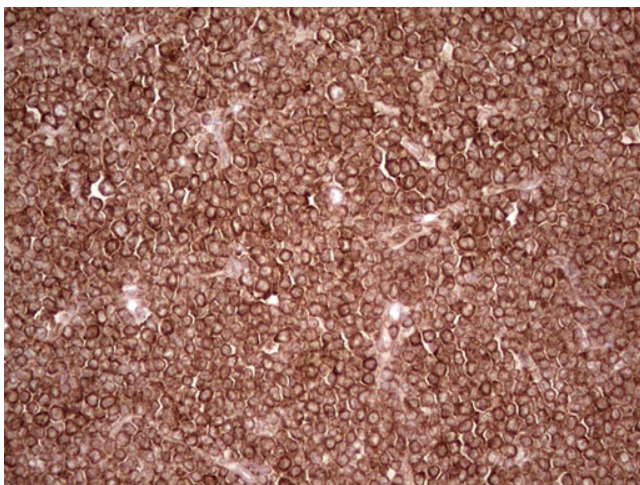




Immunohistochemical staining of paraffin-embedded Adenocarcinoma of Human endometrium tissue using anti-WIBG mouse monoclonal antibody. (Heat-induced epitope retrieval by 1 mM EDTA in 10mM Tris, pH8.5, 120°C for 3min, TA806496)

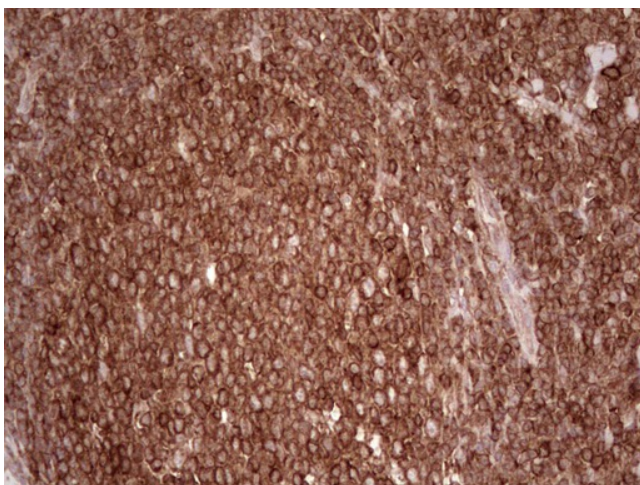


Immunohistochemical staining of paraffin-embedded Human prostate tissue within the normal limits using anti-WIBG mouse monoclonal antibody. (Heat-induced epitope retrieval by 1 mM EDTA in 10mM Tris, pH8.5, 120°C for 3min, TA806496)



Immunohistochemical staining of paraffin-embedded Human lymphoma tissue using anti-WIBG mouse monoclonal antibody. (Heat-induced epitope retrieval by 1 mM EDTA in 10mM Tris, pH8.5, 120°C for 3min, TA806496)





Immunohistochemical staining of paraffin-embedded Human tonsil within the normal limits using anti-WIBG mouse monoclonal antibody. (Heat-induced epitope retrieval by 1 mM EDTA in 10mM Tris, pH8.5, 120°C for 3min, TA806496)